

广州广日股份有限公司

2014 年年度社会责任报告



2014 1 1 2014 12 31

第一部分 关于广日股份.....	4
.....	4
.....	6
.....	6
.....	7
第二部分 关于 2014 年度社会责任履行情况.....	8
.....	8
.....	8
.....	9
.....	12
.....	13
.....	18
.....	19
.....	19
.....	20
.....	21
.....	21
.....	22
.....	23

2014 12 31

12.85

110

2012

120%

500

A 500

七

2014

2014

LED



1

2

13

2

1

2014

10

6

4

34

2

2014

2013

2014

2013

2014

2014

5

12

1

1

3

5

2

2

3

2014

5

10

1 ,

2014

3

[2013]43

(2014 1

)

2

9 2013

2013

9 2014 3

3

2013 2014

5 2013-2014

4

第二部分 关于 2014 年度社会责任履行情况

1

2014

8

300

3

,

2014 6 19

1

2



1

“ ”

2014

3

4

2014

12997

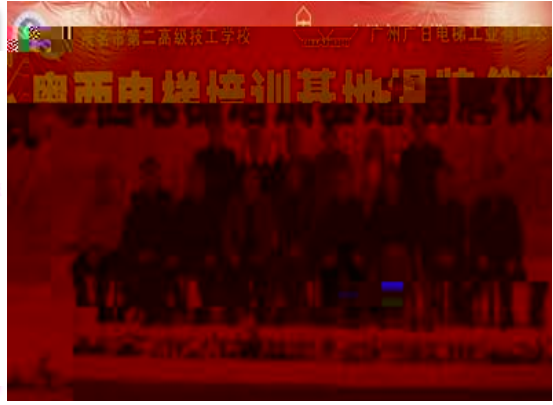


2



3

七



5

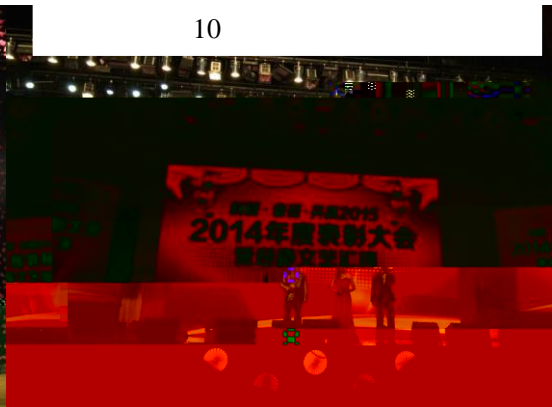




10



9



11

AAA

AA

,

1



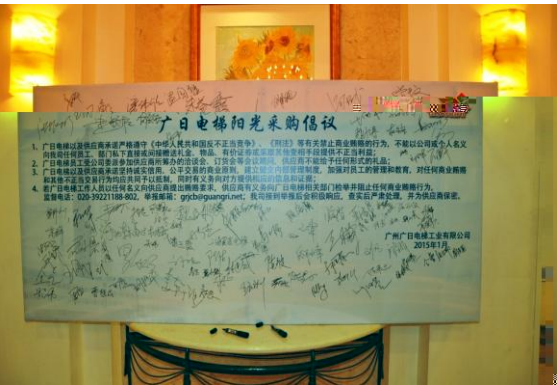
12

七

2014

21

2



13

2014

G+

1



+

+360

14

2014

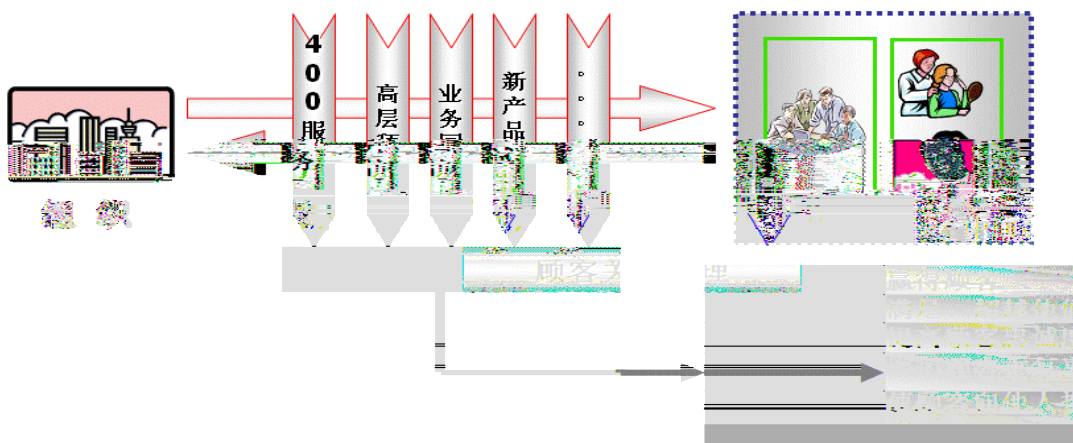
500

3

7 24

2014
6
8
2

400



4

2012

12

2014

20



16

”

”

LED

5

2014

2014

96.9%

91.45

100

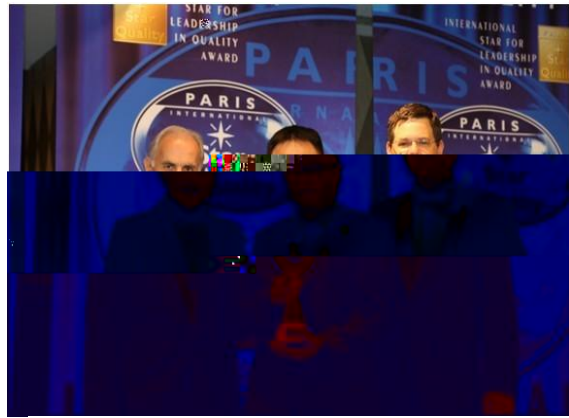
16

2014
 88.61 100%
 2014
 2013 7%
 6

ISO90001 ISO14001 OHSAS18001 ISO 10012 TSG Z0004-2007

2014
 BIT Business
 Initiative Directions, BID

2014



QC 2014
 8

17 “ ”

11 (ISO9001 ISO/TS16949 ISO14001
 OHSAS18001 ISO10012() ISO17025(CNAS)



18 QC

(CE UL)

, CNAS ILAC

,

2014

		2014
	96%	97%
	96%	99%
	96%	98%
	99.99%	99.99%

2014

0.06%

2013

0.01%

,

2014

1

8

0

2014

2

6

16

17

10 16

七

七



19



20 “ ”

1

FMS

50%

LES

GPS

LED

LED

2

50%

99%

96%

99%

70%

2014

2013

七 2014



21

PPT

6 10

10 25

30

12 28



22

12 30



21

96333

2014 4

860,000 8

200,000 9 SEE 100,000

11 290,000

11 12

23,636.1 20,000

2014 198

10 26

91

2014



22

9188.2

3.8

1

17

23

6 12

6

76

76

19,485

七